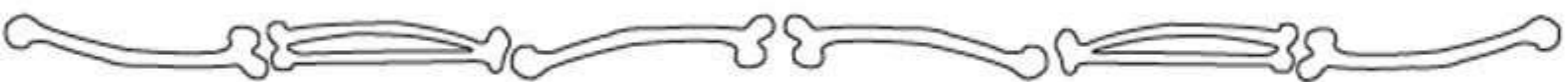
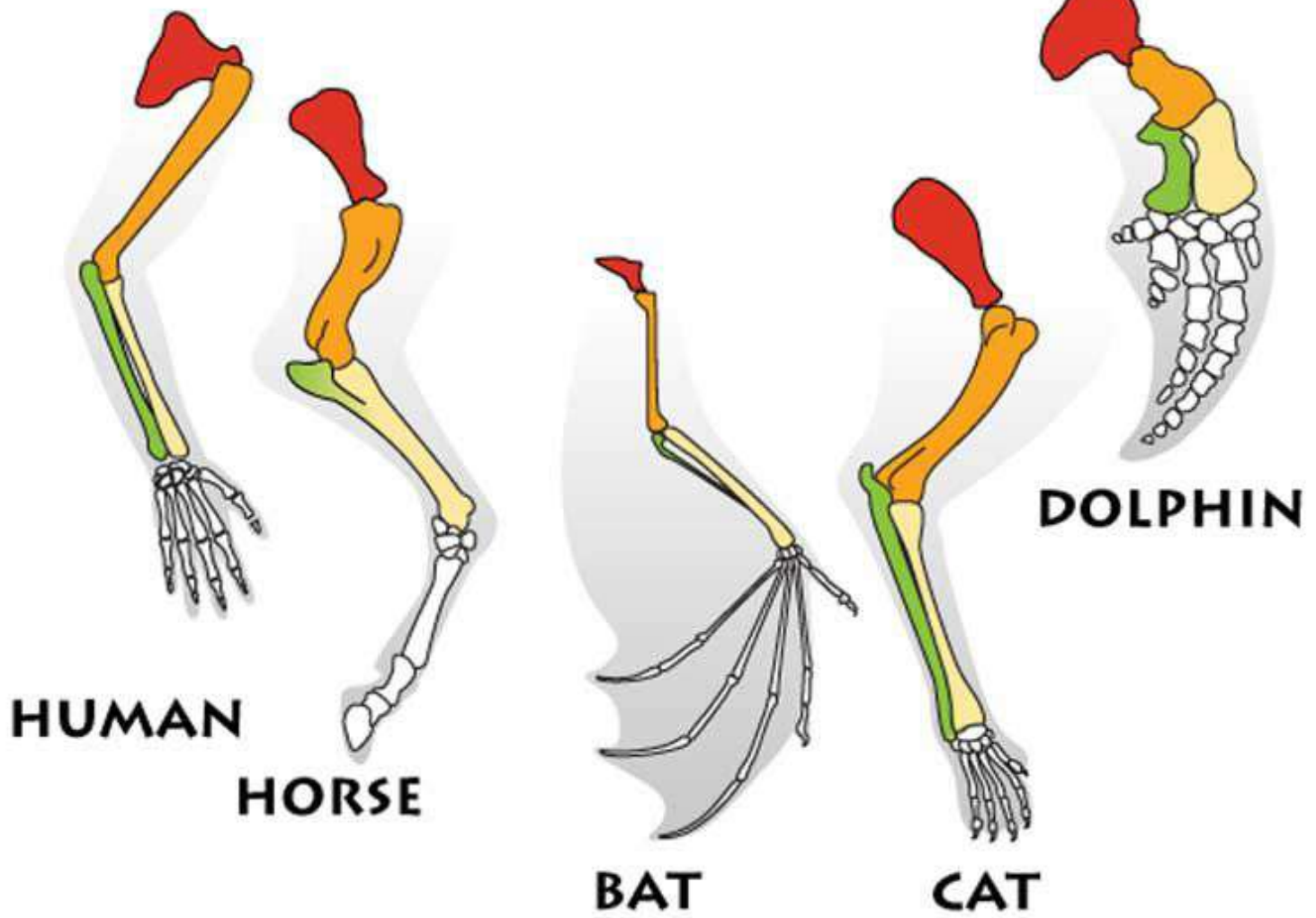


# ANIMAL ARMS SAME & DIFFERENT



1. CIRCLE THE **ORANGE HUMERUS** ON EACH ARM.
2. WHAT COLOR ARE THE **SCAPULAS**? POINT TO THEM.
3. WHICH ANIMALS HAVE BOTH A **RADIUS** AND **ULNA**? DRAW AN "X" ON THE ARM THAT DOES NOT.
4. AT THE TOP OF EACH GREEN BONE (**ULNA**) IS THE ELBOW. TOUCH YOUR ELBOW.
5. THE **ULNA** IS IN LINE WITH THE PINKY FINGER. IT STARTS AT THE ELBOW AND ENDS AT THE WRIST. THE **RADIUS** IS IN LINE WITH THE THUMB. FIND BOTH THESE BONES ON YOURSELF.

